

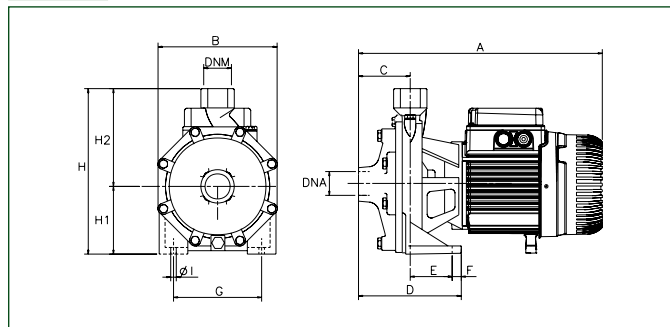


# K BITURBINA

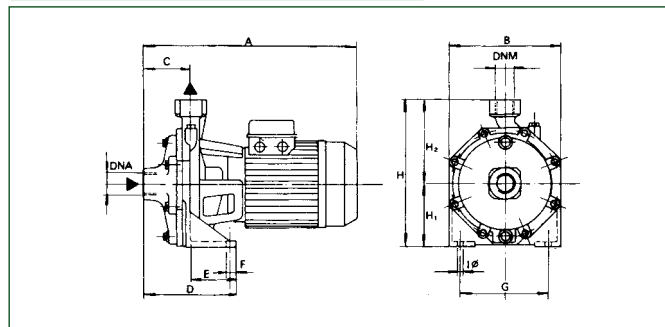
## BOMBAS CENTRÍFUGAS



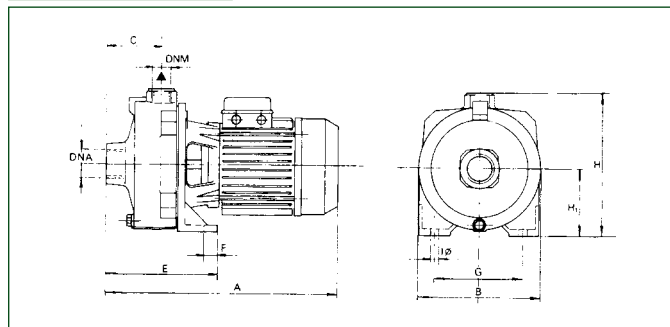
### K 35/40



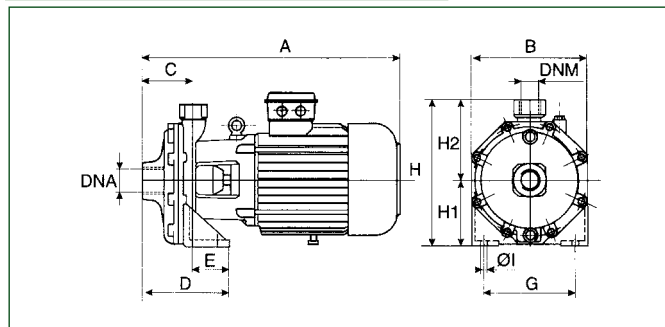
### K 45/50 - 55/50 - 66/100 - 90/100



### K 35/100 - 40/100



### K 70/300 - 80/300 - 70/400 - 80/400



MODELO	A	B	C	D	E	F	G	ØI	H	H1	H2	DNa	DNM	DIMENSIONES EMBALAJE			VOL. m <sup>3</sup>	MONOFÁSICO		TRIFÁSICO	
														L/A	L/B	H		PESO Kg	CANT. x PALÉ	PESO Kg	CANT. x PALÉ
<b>K 35/40</b>	342	180	76	148	72	15	148	9,5	235	100	135	1" G	1" G	392	232	262	0,024	15,9	27	15	27
<b>K 45/50</b>	370	210	75	144	69	15	165	11,5	268	118	150	1¼" G	1" G	415	234	295	0,028	23,3	21	22,5	21
<b>K 55/50</b>	370	210	75	144	69	15	165	11,5	268	118	150	1¼" G	1" G	415	234	295	0,032	27,2	18	23,9	21
<b>K 35/100</b>	387	205	88	-	169	20	145	11	233	108	-	1½" G	1" G	415	234	295	0,028	22	21	21	21
<b>K 40/100 M</b>	461	205	88	179	20	20	145	11	233	108	-	1½" G	1" G	510	234	285	0,034	25,9	18	-	-
<b>K 40/100 T</b>	387	205	88	179	20	20	145	11	233	108	-	1½" G	1" G	415	234	295	0,028	-	-	22	21
<b>K 55/100</b>	450	256	88	160	72	18	200	14	312,5	140	172,5	1½" G	1" G	500	274	333	0,045	40	18	19	18
<b>K 66/100</b>	450	256	88	160	72	18	200	14	312,5	140	172,5	1½" G	1" G	500	274	333	0,045	44	18	40,7	18
<b>K 90/100</b>	450	256	88	160	72	18	200	14	312,5	140	172,5	1½" G	1" G	500	274	333	0,045	46	18	44	18
<b>K 70/300</b>	595	270	122	182	60	20	210	14	340	160	180	2" G	1¼" G	680	330	470	0,106	-	-	72	6
<b>K 80/300</b>	595	270	122	182	60	20	210	14	340	160	180	2" G	1¼" G	680	330	470	0,106	-	-	78,5	6
<b>K 70/400</b>	635	270	122	182	60	20	210	14	340	160	180	2" G	1¼" G	680	330	470	0,106	-	-	74	6
<b>K 80/400</b>	635	270	122	182	60	20	210	14	340	160	180	2" G	1¼" G	680	330	470	0,106	-	-	79	6